

EasyLogic Ball Valve and Actuator BVA Series

Schneider Electric's Control Ball Valves are a new generation of characterized control valves. The V-shaped ball core design provides a perfect equal percentage flow curve. Coupled with high precision valve actuators, CBVs ensure precise control at high flow capacity, often eliminating the need of a pipe reducer. Applications include Hot and Chilled water coils in air handling units, unit ventilators, and VAV boxes.

Benefits

1

High reliability
Stainless Steel
Core and stem

2

**Easy
installation**

3

**Equal
percentage
V-Shape**

4

**Multi-function
Dip set**

5

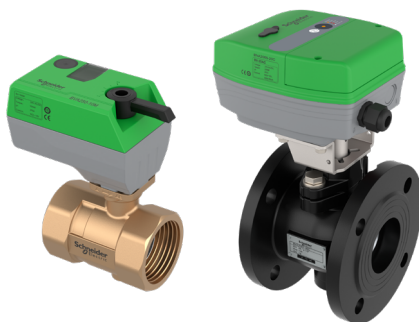
**High intensity
Ductile Iron Valve
for DN65-150**

6

**Selectable
solutions
for DN50 actuators**

7

**High quality
100,000 full life
cycles**



Features

V-shaped ball core design creates a perfect equal percentage flow characteristic with exceptional stability.

- No pressure surge when the valve is opened or closed.
- High rangeability (> 100:1) and close-off pressure.
- DIP switch selectable control functions addressing many different application requirements.

| Actuator | |
|--------------------------|---|
| Power Supply | 24VAC/DC |
| Control/Feedback Signal | 0(2)-10 V, 0(4)-20 mA |
| Protection Class | IP54 for 3/5/10 N-m: IP65 for 20/50 N-m |
| Multi solutions for DN50 | YES |
| Indicator Lamp | YES |
| Self Adaption | YES |

| Valve | |
|-------------------|---|
| DN size | DN15-150 |
| Media Temperature | -5 to 120 °C |
| Kvs | High |
| Nominal Pressure | PN25 for D15-50; PN16 for D65-150 |
| Shut-Off Pressure | 1400kPa for DN15-50, 800kPa for DN65-150 |
| Body | Brass for DN15-50, Ductile iron for DN65-150 |
| Ball | Stainless steel |
| Seat | PTFE |
| Stem | Stainless Steel |
| Pipe Connection | ISO 7/1 for DN15-50, ISO7005-2 for DN65-150 |
| Leakage rate | 0...0.01% Kvs, no leakage on Pre- Delivery Inspection |

Nomenclature

| Size | Assembly Part No. (Recommended Order No.) | Control Signal | Actuator Torque | Maximum Close-off Pressure | Kvs (m3/H) |
|-------|--|--|--------------------|-------------------------------|------------|
| DN15 | BVA215-3M | 0(2)-10V DC, 0(4)-20 mA | 3 | 1400 kPa | 5.5 |
| | BVA215-3 | 3-position | | | |
| DN20 | BVA220-3M | 0(2)-10V DC, 0(4)-20 mA | | | 10 |
| | BVA220-3 | 3-position | | | |
| DN25 | BVA225-3M | 0(2)-10V DC, 0(4)-20 mA | 18 | | |
| | BVA225-3 | 3-position | | | |
| DN32 | BVA232-5M | 0(2)-10V DC, 0(4)-20 mA | 5 | 23 | |
| | BVA232-5 | 3-position | | | |
| DN40 | BVA240-5M | 0(2)-10V DC, 0(4)-20 mA | | 35 | |
| | BVA240-5 | 3-position | | | |
| DN50 | BVA250-5M | 0(2)-10V DC, 0(4)-20 mA | | 500 kPa | 60 |
| | BVA250-5 | 3-position | | | |
| | BVA250-10M | 0(2)-10V DC, 0(4)-20 mA | 1400 kPa | | |
| | BVA250-10 | 3-position | | | |
| DN65 | BVA2065-20C | 0(2) - 10 V DC, 4-20 mA, 3-positon | 20 | 800 kPa | 120 |
| DN80 | BVA2080-20C | | | | 192 |
| DN100 | BVA2100-20C | | 50 | | 279 |
| DN125 | BVA2125-50C | | | | 398 |
| DN150 | BVA2150-50C | | | | 540 |

se.com

Life Is On

Schneider Electric

Schneider Electric
35, rue Joseph Monier
92500 Rueil Malmaison - France